

MANFRED ROUND TABLE IN SLOVENIA

Management of protection forests in Alpine Space – approaches in forest praxis (Gospodarjenje z varovalnimi gozdovi na območju – pristopi v gozdarski praksi)

A MANFRED roundtable about the new approaches in management of protection forests and forests with protective role has been initiated in December 2012 in Slovenia. Aims of the roundtable discussion are the evaluation of protection forests management strategies in Slovenia, the production of new recommendations for forestry praxis and the exchange of experiences on that field with other Alpine space countries.

Protection forests and their functions are becoming more and more important in a climatically unstable environment. To evaluate and improve present protection forests management in Slovenia a focused discussion with researchers and practitioners in Slovenia on that field has been set. Later on, results of that discussion will be presented and critically revised by foresters and forest owners in local environment of Solčava – Luče MANFRED case study area.

An important source of information and suggestions are also experiences of other Alpine space countries, which has developed their own systems for decision-making process in protection forests (for example Swiss NaiS, French GSM). Those approaches and ideas can be adapted to present forest management conditions in Slovenia and to predicted climate change impact in Slovenian Alps.

Final result of that discussion will be a list of recommendations for improvement of present management and monitoring of protection forests in Slovenia and for definition of an educational program for foresters about protection forest management within climate change frames.

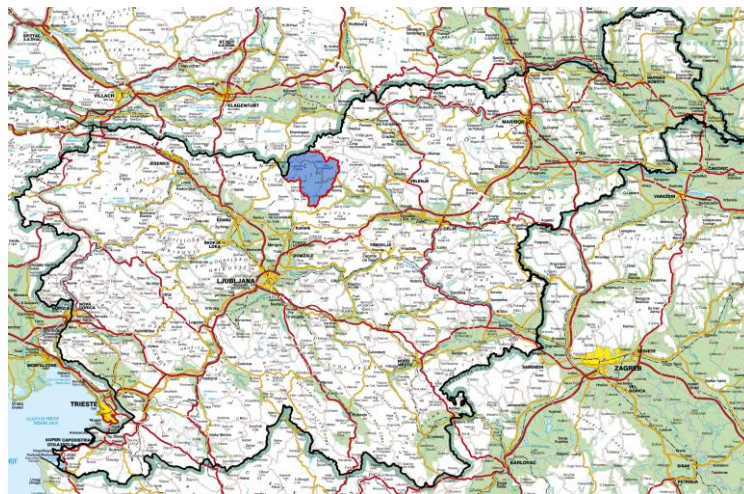
This educational programme will be carried out on MANFRED project training plot (marteloscope) Rinka, which has been established with the help of MANFRED partners from France (CEMAGREF). Forest management training plot Rinka is located in Logarska dolina near village Solčava (northern Slovenia). Training plot is on a steep slope, covered with beech forest. Since many threats are present on the plot (rock fall, snow avalanches and torrents) it has very important educational role for local foresters.

On 15th of December an initial session of Slovenian protection forest roundtable has been organized in Ljubljana. Participants were from four main forestry institutions in Slovenia dealing with protection role of forests (Biotechnical faculty – Dept. for forestry and renewable forest resources, Torrent and Erosion Control Service of Slovenia, Slovenian Forestry Institute and Slovenia Forest Service). Roundtable has started with description of

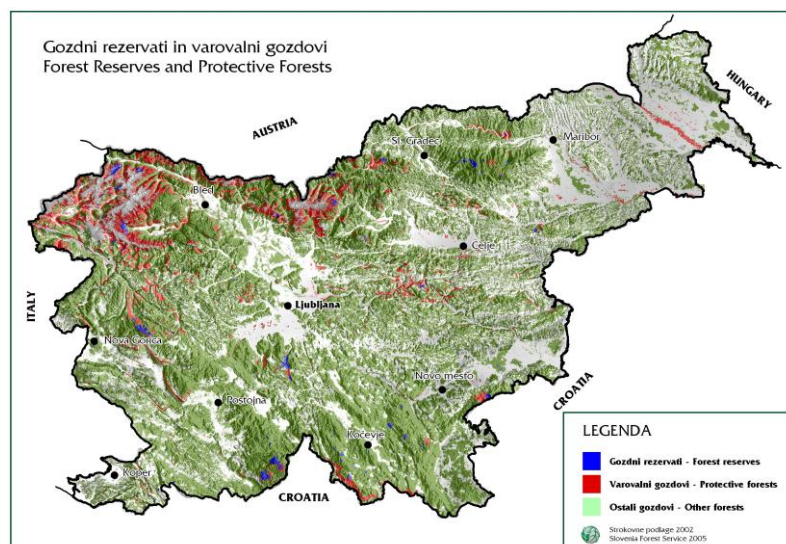
present protection forest management system in Slovenia, quantification of forest management activities in protection forests and evaluation of forestry practice approach to protection/protective function of forest stands.

Result of roundtable discussion was a set of recommendations that will improve, optimize and target management of protection forests in Slovenia and a draft structure of educational programme for foresters, which will fulfil present gaps in their knowledge.

Discussion about the management of protection forests in Slovenia will be further facilitated on LinkedIn network and on meetings with forest practitioners. All opinions and suggestions from Alpine space countries and abroad are very welcome.



1. Location of MANFRED case study area Solčava – Luče in Slovenia



2. Forest reserves and protective forests in Slovenia



3. Protection forest training plot (marteloscope) Rinka in Logarska dolina

**Summary edited by the Slovenia Forest Service in the framework of the MANFRED “Management strategies to adapt Alpine Space forests to climate change” project (www.manfredproject.eu) .
Outline by the Italian Ministry for the Environment, Land and Sea in cooperation with the Institute for Timber Plants and the Environment.*